

## SECURITY PANEL VERTICAL

Experience of over 40 years...



Security panels are providing high security for sensitive areas. Based on the security scenario is used either vertical mesh or horizontal mesh sided. Köseadağ; With its long years of experience and quality in security panel production, it carries out many high security projects around the world.



Custom-Designed



High Security



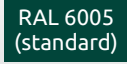

Flexible Production



Durability



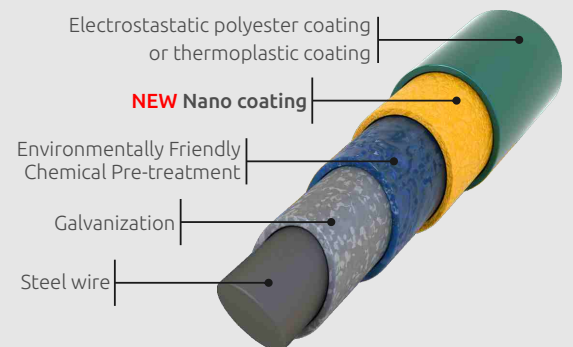
Easy Installation

Normative Standards	Finish	Colour	Mesh Sizes *	H/Panel Heights	Number of W Folds	Number of V Folds	Wire Thickness*	Panel Width*
Wire norm TSE-EN-10218-2	<b>NANO</b> coating on Galvanised steel wire to ensure high adhesion and as final layer either electrostatic polyester powder coating (min.80 µm) or thermoplastic coating (min.150 µm)	  Available at any RAL colour	<b>12,7 x 76,2 mm</b>	0,99 m	2	2	Ø4,00mm Ø6,00mm Ø8,00mm	<b>2,50 meter</b>  3,00 meter
Galvanization norm 10244-2 Class D (50gr Zn/m²)				1,45 m		2		
Welded Mesh Panel norm TSE-EN-10223-7				1,76 m		2		
Tensile Strenght 450-650N/mm²				1,98 m		3		
				2,52 m		4		
				2,98 m		5		

All technical features and material details may vary on project basis. Available in different panel sizes, mesh sizes and wire thickness. 5% tolerance on overall dimensions.

### NANO COATING

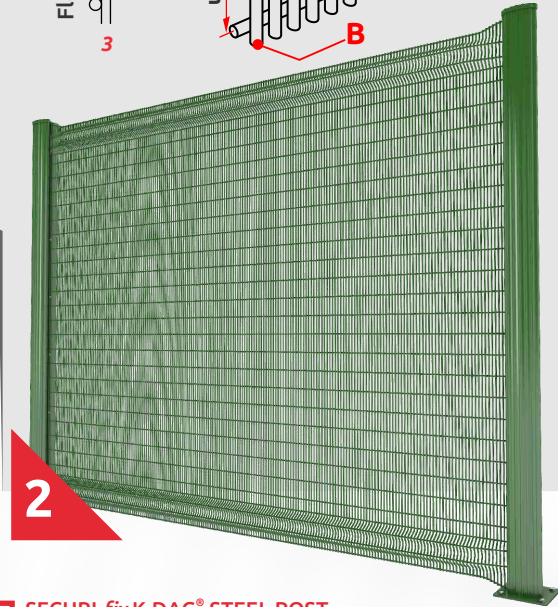
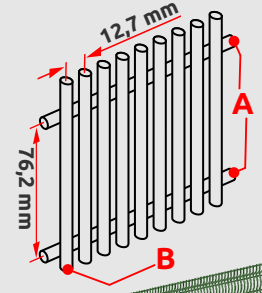
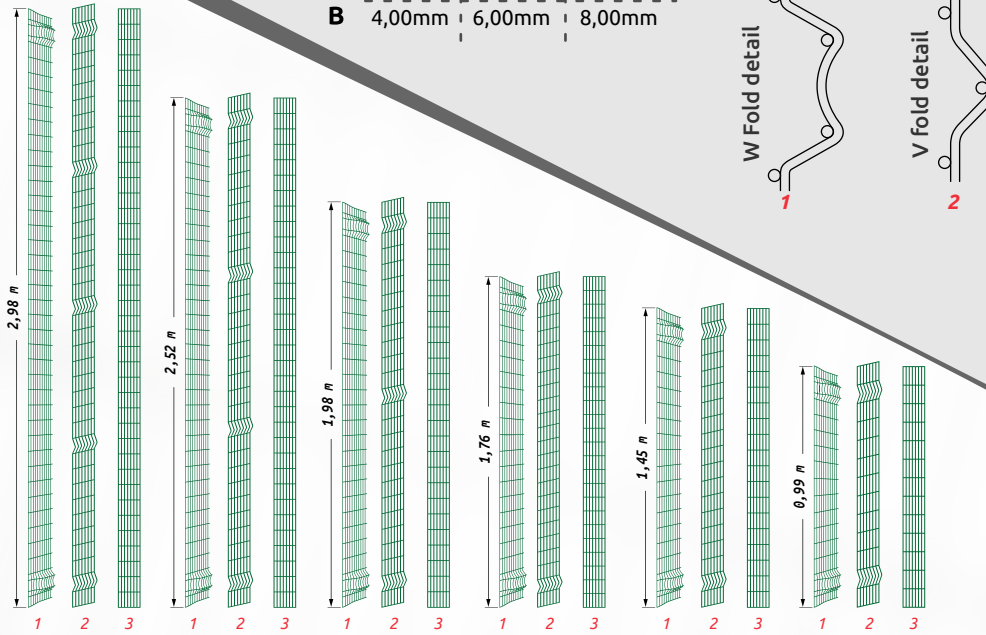
NANO coating is a special technology that increases the adhesion performance of the coating to the metal surface and creates pores in NANO sizes. Thanks to these pores, the powder coating adheres with high performance on metal surface.





## Wire thickness

A	4,00mm	6,00mm	8,00mm
B	4,00mm	6,00mm	8,00mm

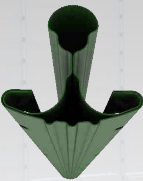


## Advisable Post and Fixation Systems



### EASY fix K-DAG® STEEL POST

Easy-Fix K-DAG Steel Post (90x90mm) has been designed to perform maximum strength with minimum material to keep it economically. The panels are fixed to post without accessories such as screws, bolts, clips or clamps. As a result it avoids damage on materials during fastening. Slots are at every 100 mm and each post is covered with a plastic cap.



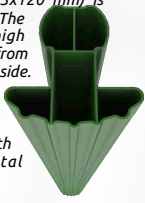
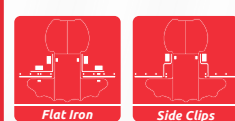
### SECURI fix K-DAG® STEEL POST

SECURI fix K-DAG steel post (123x120 mm) is specially designed for high level security applications. The panels are fixed to post from rear side which prevent any break through from front side. Because of this feature its named SecuriFix K-DAG. 2 way of fixation; with cover plate or metal clips.



### SECURI fix K-DAG® ALUMINUM POST

SECURI fix K-DAG aluminum post (123x120 mm) is specially designed for high level security applications. The aluminum type is especially recommended for high corrosive applications. The panels are fixed to post from rear side which prevent any break through from front side.



### PROFILE POST

Profile post is used as a standard all over the world in different sections. The most common sizes are 40x60mm, 50x50mm, 60x60mm. The panels are fixed on the front side of the posts by metal clips and bolts



## APPLICATION AREAS



Airports



Prisons



Seaports



Borders



Energy & Resources



Military



Industrial Facilities



High sensitive Facilities